

Pepperl+Fuchs GmbH – Königsberger Allee 87 – 68307 Mannheim - Germany

**Please quote the following contact information when publishing:**

Tel.: +49 621 776-2222, Fax: +49 621 776-27-2222, [www.pepperl-fuchs.com](http://www.pepperl-fuchs.com), [pa-info@de.pepperl-fuchs.com](mailto:pa-info@de.pepperl-fuchs.com)

Editorial contact: Christa Blas (extension: -1420, fax: -1108), [cblas@de.pepperl-fuchs.com](mailto:cblas@de.pepperl-fuchs.com)

## **Pepperl+Fuchs Advanced Diagnostics Module is Breakthrough Product of 2006 According to Processing Magazine**

Pepperl+Fuchs' innovative Advanced Diagnostic Module (ADM) for the FieldConnex® Power Hub has been named the Breakthrough Product of 2006 by Processing magazine. The award recognizes products, services and/or technology that have made significant contributions in the process industries within the last year, and are expected to greatly impact the industry for years to come.

“We are delighted and honored to be recognized by Processing magazine for our Advanced Diagnostic Module, with what has become one of the most distinguished and well-respected awards in the industry,” says David Hohenstein, Department Manager, Pepperl+Fuchs. “The ADM removes the complexity from FOUNDATION Fieldbus H1 and PROFIBUS PA installations and is unique in its ability to bring control to the fieldbus by monitoring the fieldbus physical layer, while creating transparency and easy evaluation of the network.”

Comprehensive Physical layer measurements and alarms provided by the ADM are transmitted in real-time to the maintenance station and are easily handled through modern software, the Diagnostic Manager, right in the control room. Summary alarms can easily be integrated into any DCS via OPC Client Software. Operators only receive information relevant to their work. The ADM enables maintenance personnel to pinpoint fault locations quickly and efficiently from the control room.

The ADM eliminates repetitive tasks and automatically generates network documentation for each segment and device. The unique built-in oscilloscope can be set to trigger on numerous events. Engineering contractors, commissioning experts, plant operators and maintenance specialists gain visibility into the fieldbus physical layer for faster commissioning work, longer plant-uptime, truly preventative maintenance.

Author: Kristen Barbour, Product Manager.  
Andreas Hennecke, Product Marketing Manager  
Division Process Automation

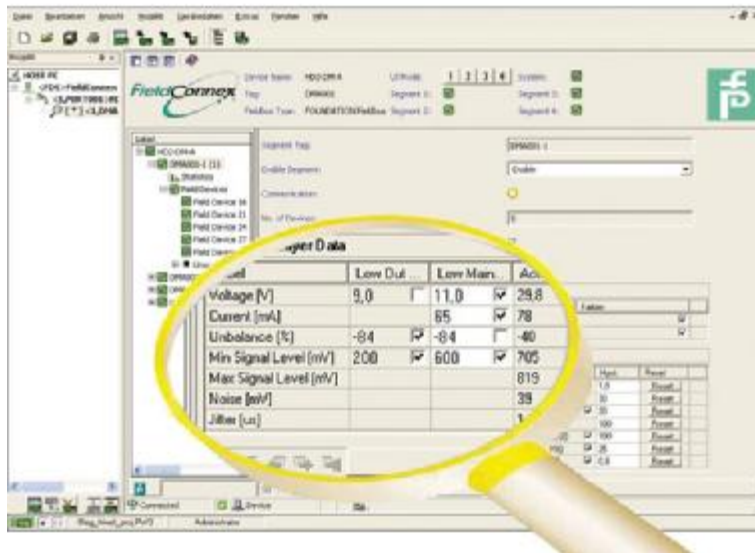
Characters: 1661, without space characters

Pictures: No. ??? in Cumulus data base



93\_1228\_10.jpg

Fieldbus made easy through monitoring of the fieldbus physical layer – online and in realtime. The Advanced Diagnostic Module for the FieldConnex Power Hub.



93\_1228\_12.jpg

Easy to operate, quick to respond to. Detailed physical layer measurements per device and per segment with history and alarm functions.



breakthroughlogo\_award.pdf – ohne Bildnummer.

Release date: 2006-12-14